

 **Applicase**

About Applicase

Applicase is a trademark of Skyori Ltd. company that develops software products and services in partnership with other software development companies. The company's office is located in Perm, Russia. We are an experienced international team that has gathered together to enter new markets and use similar tools, processes and technological principles of software development.

At Applicase, we create software products and services that improve the quality of people's lives. We develop information systems of various levels of complexity, ideally suited to the automated business processes of our customers from several industries and authorities.

The Applicase team comprises experienced specialists and professionals in the field: programmers, analysts, testers, architects, project managers, and industry experts.

Direction of development

We create information systems of various levels of complexity, ideally suited to the automated business processes of our customers from different industries and authorities.

Benefits of our custom development approach:

- Deep analysis of business processes and customer needs;
- The customer receives a unique product per the organization's digital development strategy;
- The customer receives the exact set of functional characteristics that are required;
- The software solution is updated and developed along with the development of business and tasks of the customers;

Applicase is engaged in the development of information systems of various profiles. The following are the main areas:

- Geoinformation systems;
- Integration solutions;

- Web applications;
- Mobile applications;
- Business process automation systems based on the process approach and work control;
- Analytical systems;
- Project management systems;
- Artificial Intelligence solutions.

Geoinformation systems

We develop geo-portals, industry-specific GIS applications, cartographic access services, systems for processing and analyzing spatial and semantic data, and integration services for using heterogeneous and distributed information in GIS. We create maps according to corporate standards.

Integration systems

We offer our clients modern ways of integration based on service-oriented architectures. Such architectures are based on a corporate service bus, which allows organizing information interaction in a distributed environment between various internal and external systems and services according to standards common for the entire enterprise. This approach permits you to gradually and at the lowest cost connect existing and newly created services and systems to a single enterprise integration platform.

Web Application

We have extensive experience creating technically complex yet user-friendly web applications used by thousands of users.

Mobile Application

We develop modern mobile applications. Thanks, how many users get access to the organization's information resources from their mobile devices.

Business process automation systems

Of the many activities we are into as a company, automation of business processes of various levels of complexity is one of our main activities.

The peculiarity of our approach - is a thorough examination of automated processes and, if necessary, their refinement.

The team has deep competencies in organizing effective business processes in various industries - giving our customers the advantage of building workflows in line with industries' best practices.

Analytical Systems

We develop and implement analytical systems based on multidimensional and intelligent data analysis technologies. The analytical module can be part of complex information systems or be a completely independent solution.

These analytical systems help to identify patterns of occurrence of various situations and predict their development, which allows you to provide the necessary support for the decision-making process. Advanced technological tools allow the user to independently configure and work with analytical information in any convenient form: tables, graphs, charts, or maps.

Project Management Systems

We develop automated project management systems, as well as provide consulting services for the implementation of best practices in project management methodology.

Project management systems allow you to control the content; and monitor the use of human and financial resources, timing, and project risks.

It allows you to coordinate the actions of employees of different departments and track their workload.

Solutions using artificial intelligence technologies

The development of solutions using artificial intelligence technologies is one of the developing areas of the company's activities. Our team consists of specialists with scientific degrees and research papers in the field of artificial intelligence,

In our solutions, we use the following areas of artificial intelligence:

- NLP - natural language processing
- Machine Learning(ML) for working with images
- Ontologies, their design and practical application

Technology stack

Designing applications and information systems

- UML
- BPMN

Frontend

- Ember.js
- Flexberry Ember
- React.js
- Next.js
- AngularJS

Backend

- .NET (Web API, Entity Framework)
- Flexberry ORM
- Java (Spring)
- Python

DBMS and related tools for working with data

- PostgreSQL
- SQL Server
- ClickHouse
- Greenplum
- Redis
- Tarantool
- Liquibase

Artificial Intelligence

- SpaCy
- PyTorch
- TensorFlow
- Scikit-learn
- GigaChat
- ChatGPT

Mobile development

- Flutter
- Cordova
- Xamarin
- Android Native
- iOS Native

Integration solutions

- RabbitMQ
- Flexberry Service Bus
- WCF (.NET Framework)
- Apache Camel (Java)
- Apache ActiveMQ
- Apache Kafka

Geo-information systems

- Geoserver
- MapServer
- Leaflet
- OpenLayers
- Flexberry GIS
- Skyori GIS
- Geometa

Business process management

- jBPM
- Camunda

Building reports, analytical data processing

- Pentaho
- Mondrian
- Apache NiFi
- Apache Superset
- DataLens
- Foresight Analytics Platform

Authentication and authorization

- Keycloak
- OAuth 2.0
- Flexberry Security

Blockchain solutions

- Exonum (Rust)

Text recognition (OCR)

- Tesseract
- PaddleOCR

Containerization and Deployment

- Docker
- Kubernetes

Planning, builds, version control

- Git
- GitHub
- GitLab

- Azure DevOps
- Jenkins

Code quality management

- Sonar

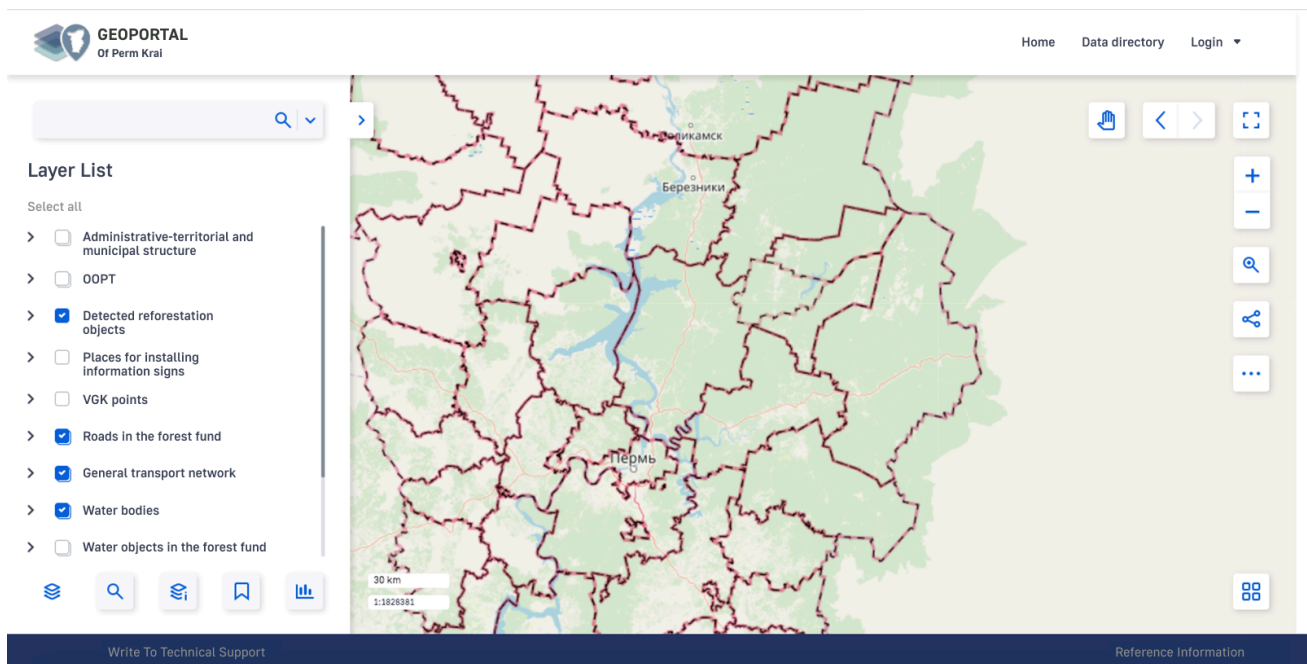
Projects

Over the years, the Applicase team has implemented and participated in different projects and the development of information systems for various profiles. We are proud of the trust of our customers and the consistently high quality of our services, and thanks to the experts we have on our team.

Below are examples of projects in the areas of activity listed above.

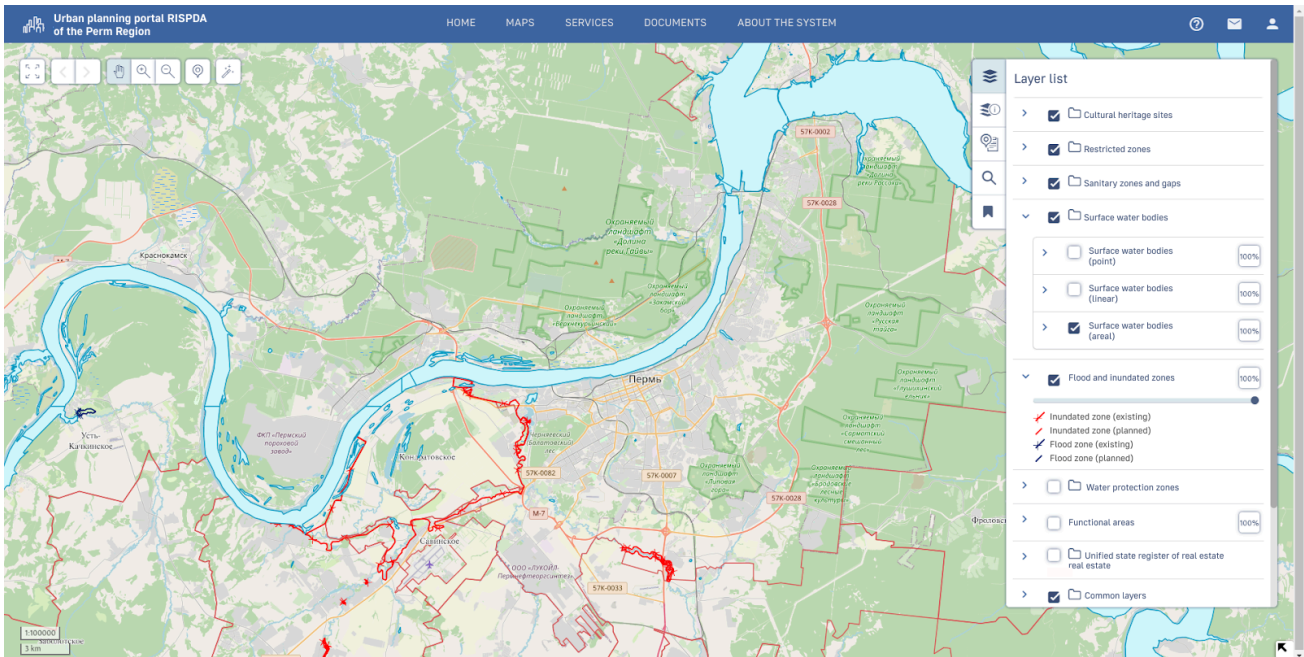
Regional geoinformation system

The application functionality creates a unified spatial data bank, displaying spatial data as feature thematic layers on the map. The app is integrated with third-party systems through API functions, such as the space monitoring subsystems of RGIS Smart Forest.



Regional information system for the provision of urban development activities

The application handles the problems that authorities have in urban planning and architecture. It is designed to facilitate the search and processing of information and provides ample opportunities for analyzing and monitoring urban development activities.



Integration bus of the company "EnergosbyT Plus"

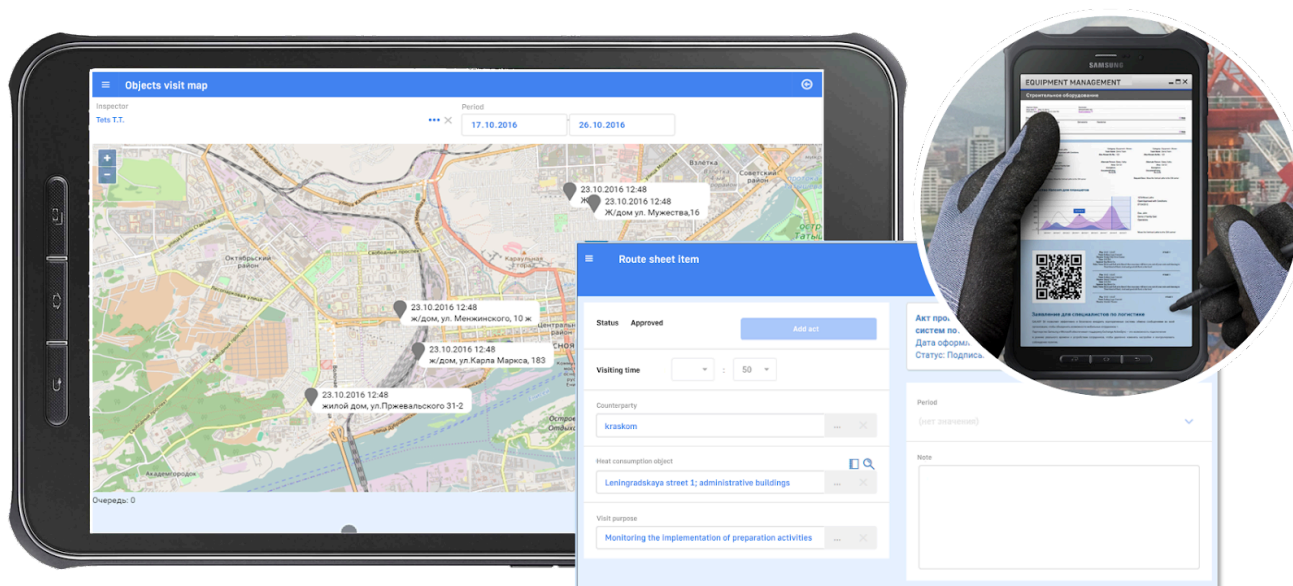
Customer: The company "EnergosbyT Plus" is a united energy sales company of the Group "T Plus" with a branch network of 14 regional branches in the territory of the Russian Federation. The company branch serves 180 thousand organizations and more than 7 million households.

Within the framework of the project. These were the performed task:

- Development and refactoring of integration services for working with a message broker.
- Optimization of highly loaded data streams using modern high-load application development tools.

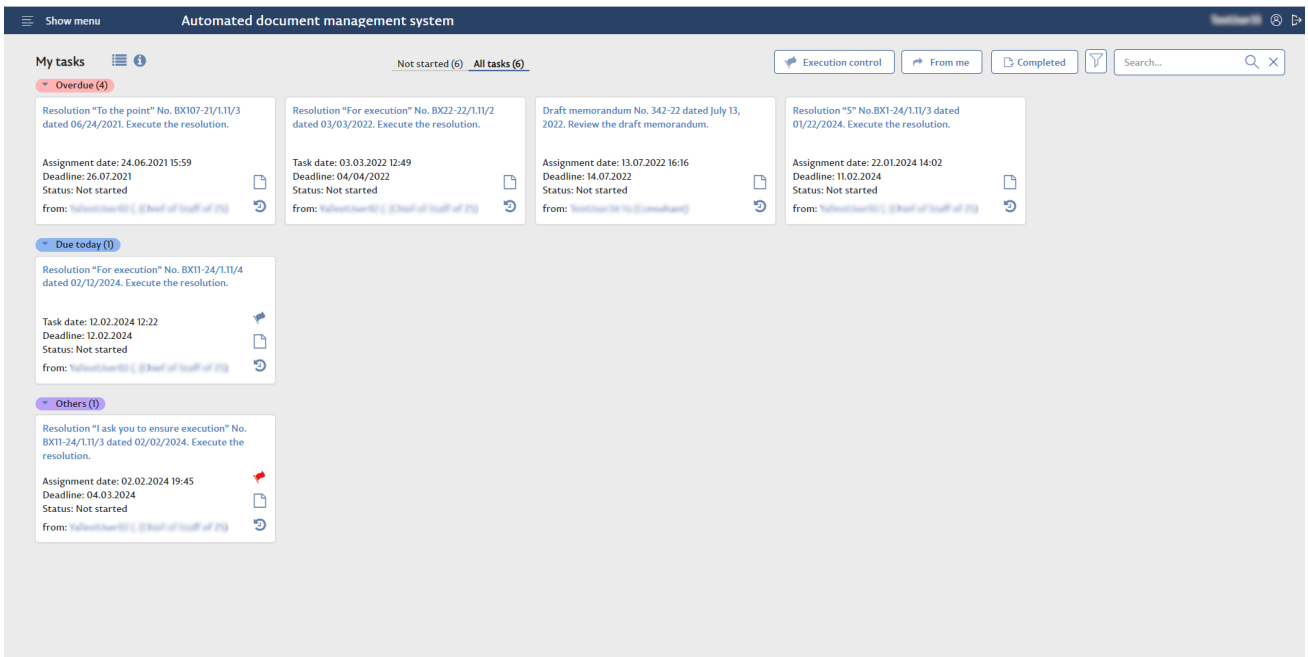
T-Mobis software package (web and mobile applications)

T-Mobis is a cloud application that allows users to work on tablets in an android App. The software package includes automated drafting of acts using a mobile app. To sign documents using electronic signatures, planning the working day of inspectors in a route sheet with daily reporting.



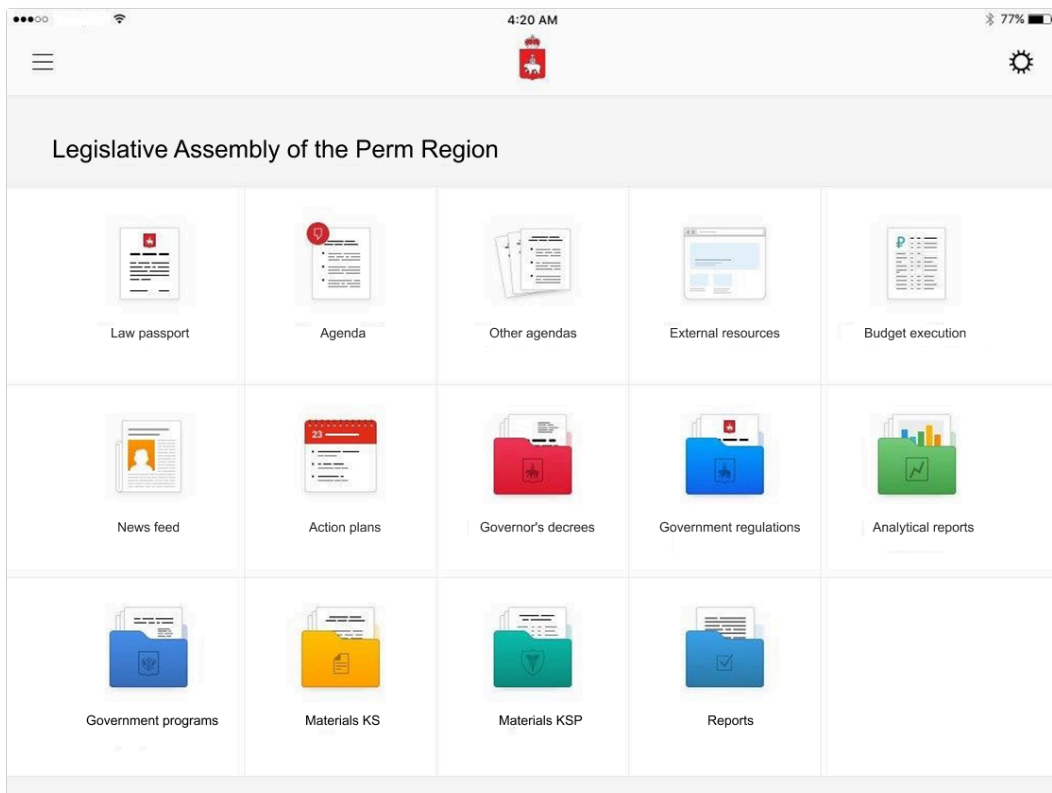
Electronic Document Management System (EDMS)

EDMS was implemented with features such as registration of incoming and outgoing documents, preparation of various document types, document review, and execution of instructions. It also included a process management subsystem for building document routes, automatic task assignments, document file creation, access rights, real-time process history, employee substitution, and electronic document signing capabilities.



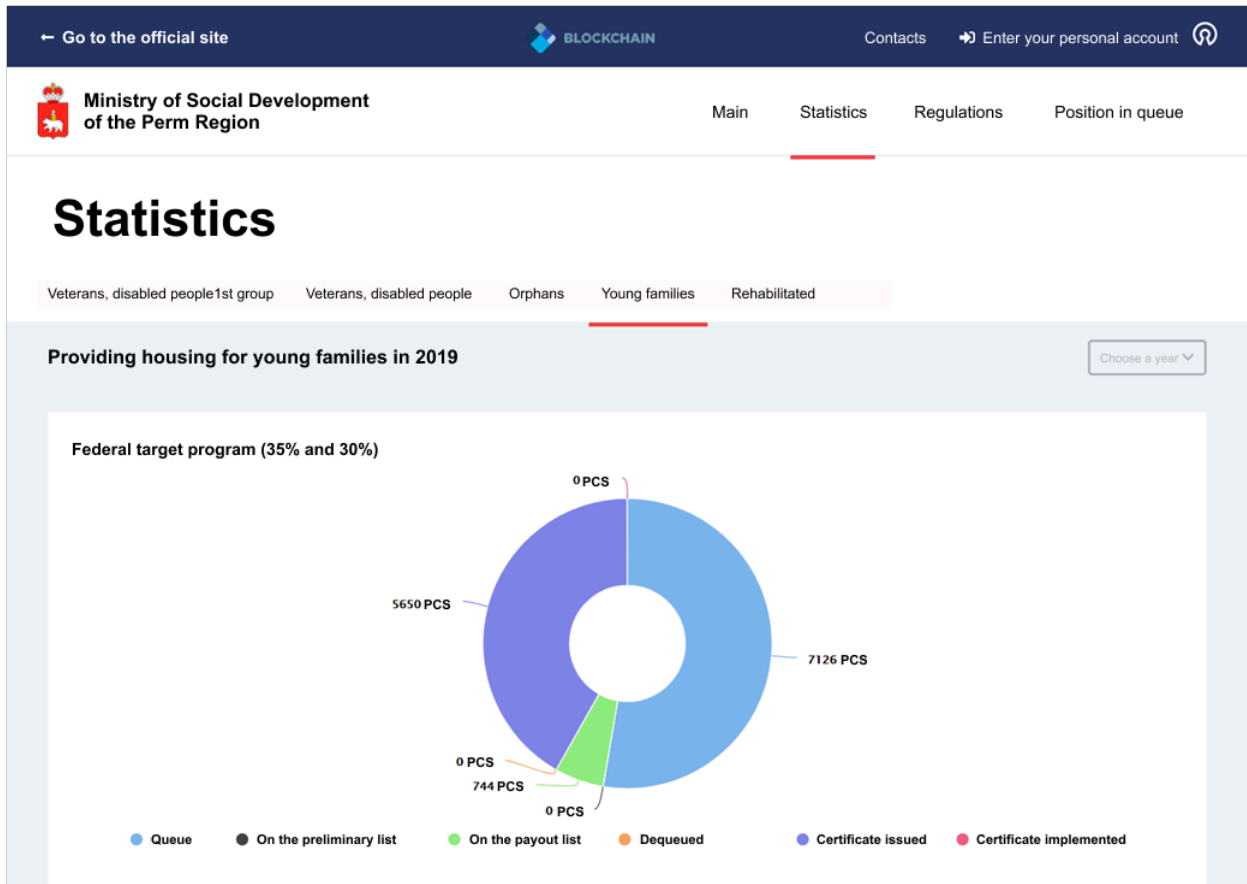
Unified virtual cabinet of the deputy (mobile application)

The system automates the processes of lawmaking and rule-making, provides the ability to work remotely with documents, and transitions to a paperless process for preparing and conducting meetings. Allows to organize a single information space for legislative and rule-making activities



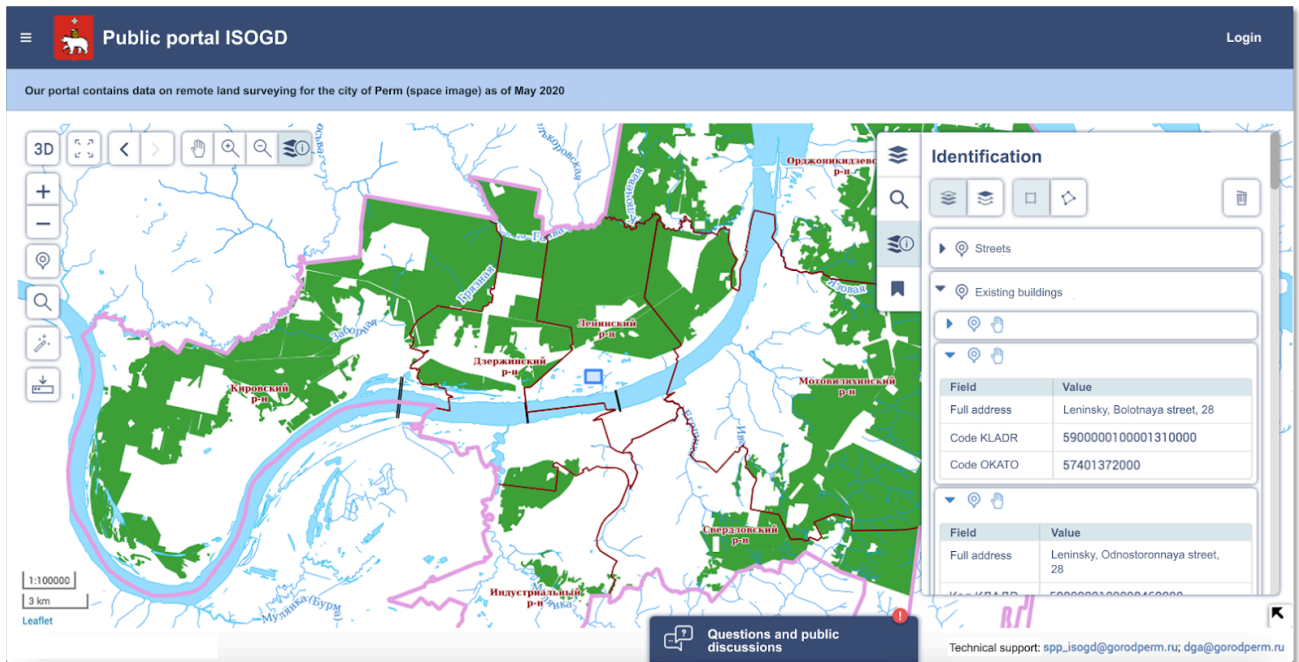
Blockchain platform for housing queues management

The platform is for technology and information accompanying the provision of social support measures in terms of improving the living conditions of privileged categories of the population as well as increasing openness and control over the process of choosing citizens to provide measures of social support.



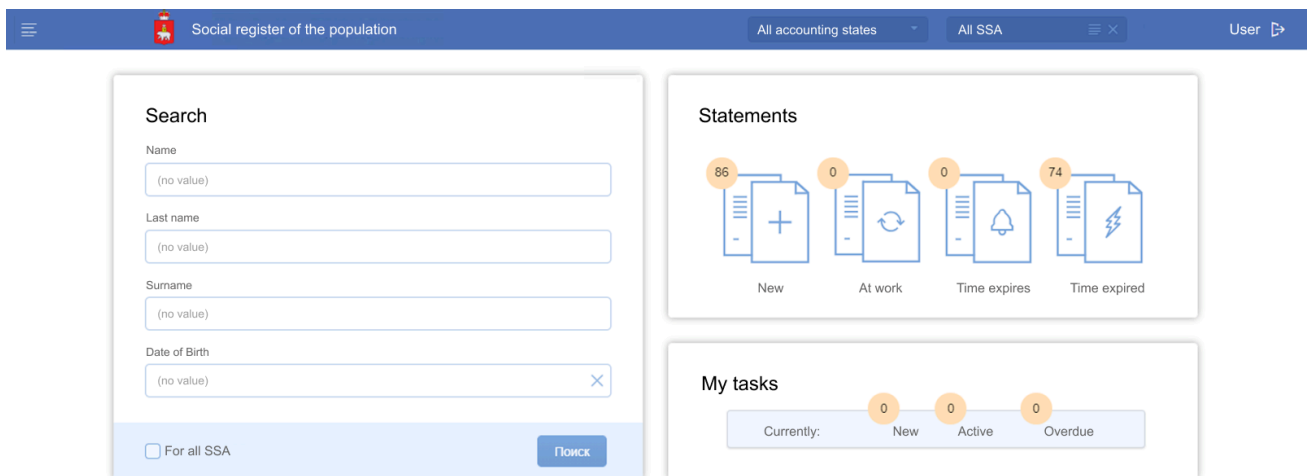
Automated information system for urban planning activities

The system is a single information space that provides a comprehensive automation of processing of preparation, storage, transmission, presentation, and data analysis in urban planning in the territory of perm.



Information system "Social register of the population"

This system automates activities related to providing measures of social assistance and supporting individuals. Providing information and technological support for maintenance of the federal and regional register of persons entitled to receive measures of state social assistance and supporting by the law, their identification, and address data.



Subsystem for building analytical reports of the electronic document management system

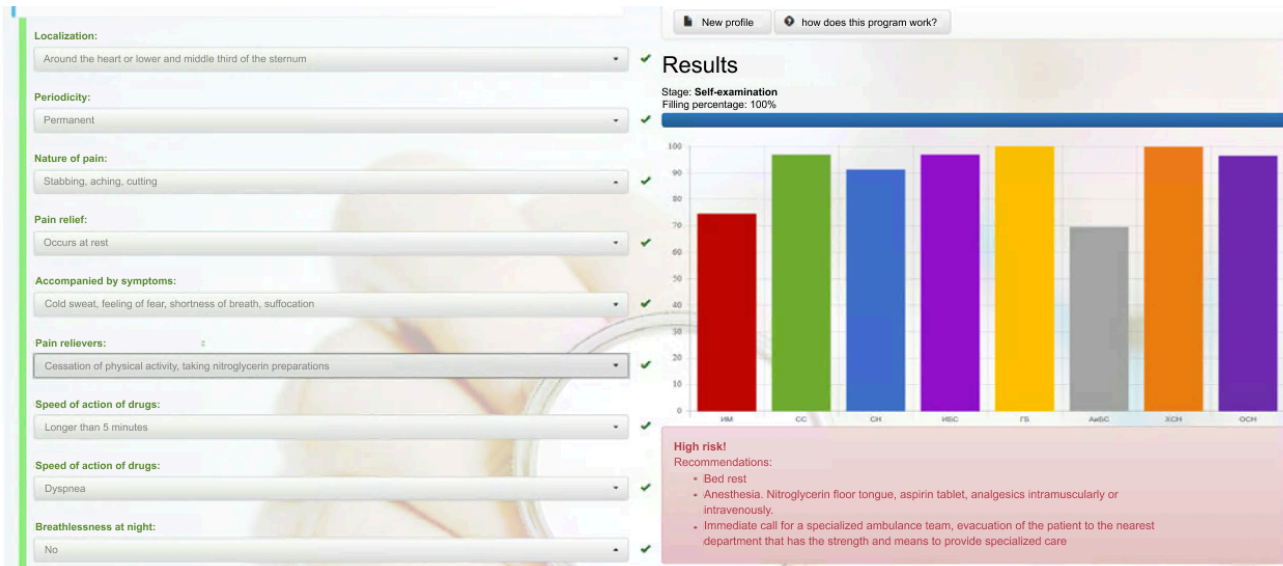
The system is for monitoring the execution of decrees, resolutions, instructions, and incoming correspondence addressed to authoritative bodies in the region and also for monitoring the execution of citizens' appeals addressed to executive authorities in a region

The screenshot displays a document management system interface. At the top, there is a navigation bar with 14 icons: Document editing, Add resolution, Execution note, Document pages, Registration as incoming, Print, List of related, Card history, Scan, Come back, Drawing notes, QR code, and Send by e-mail. Below the navigation bar, the document details are shown in a table-like format. The document number is KUVVD-001/2019-9491435, and the document date is 04.10.2019. The signature is from the Department of the Federal service for state registration, cadastre and cartography. The executor is also the Department of the Federal service for state registration, cadastre and cartography. The document is referenced by 059-22-01-23/2-37 (Perm Adm) (08.10.2019). The document status is Registered, and the number of sheets is 1+0+1. The document type is Letter, and the type of delivery is Digital document. The place of registration is the Department of the Federal service for state registration, cadastre and cartography. The summary includes information about the garage box No. 177 and the fact of commissioning of box No. 177. The themes, immediate status, note, and information fields are all set to No.

Go to: Execution, Start of document			
Document No.:	KUVVD-001/2019-9491435	Document date:	04.10.2019
Signature:	(Department of the Federal service for state registration, cadastre and cartography)		
Executor:	(Department of the Federal service for state registration, cadastre and cartography)		
To No.:	No	Document is referenced:	059-22-01-23/2-37 (Perm Adm) (08.10.2019)
Links of my organization:	No		
Links established in other organizations:	No		
To:	● (Administration of the city of Perm)		
Addressees (1) ↓			
Incoming No.:	059-22-01-23/1-46	Registration date:	04.10.2019
Document status:	Registered	Number of sheets:	1+0+1
Document type:	Letter	Type of delivery:	Digital document
Place of registration:	(Department of the Federal service for state registration, cadastre and cartography)		
Summary:	- whether the garage box No. 177 was put into operation on the basis of the above Permission to put the facility into operation; - provide the above documents to establish the fact of commissioning of box No. 177		
Themes:			
Immediate:	No	Note:	No
Note:	No		
Show statuses			
Information	No		

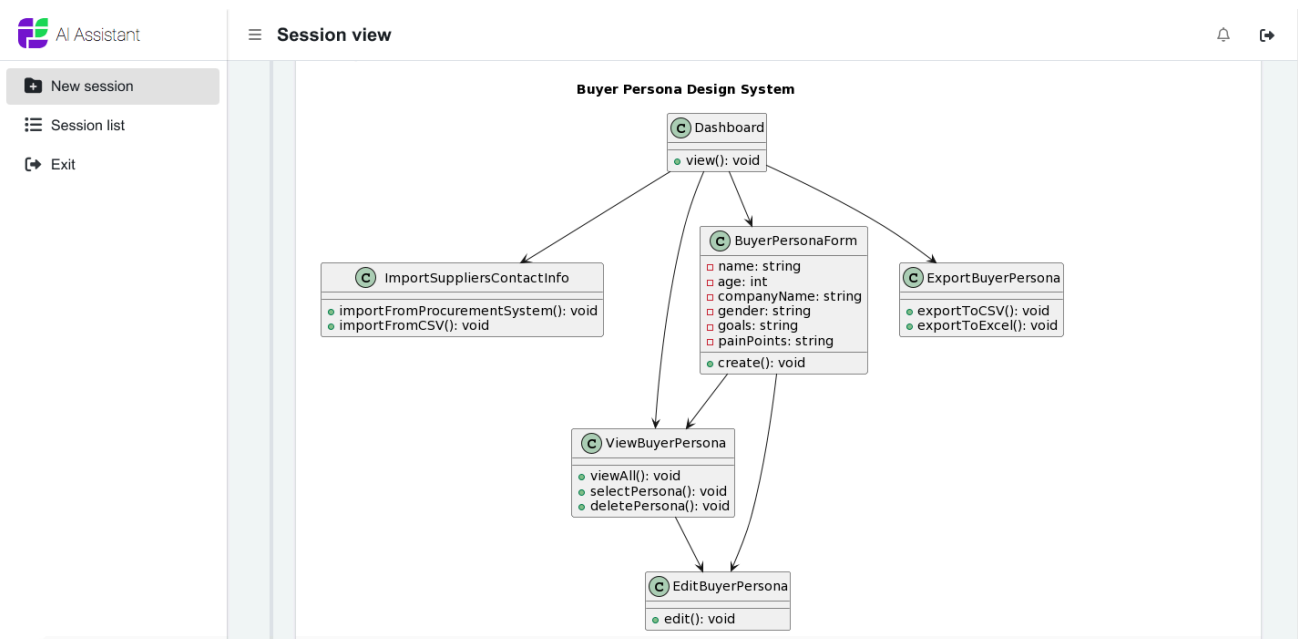
Intelligent system for diagnosis and prediction of cardiovascular diseases "KardioNet"

KardioNet is an intelligent system for diagnostics and development forecasting cardiovascular diseases built on neural network technologies. The system allows diagnosis of cardiovascular diseases, performs prognosis, and selects the best course of treatment and prevention of diseases taking into consideration the individual characteristics of the patient body.



Flexberry AI Assistant – natural language text processing service

Flexberry AI Assistant is a virtual assistant that helps business analysts with their day-to-day tasks involving text. Users can parse an input text, and the tool generates markup forms, UML Class diagrams, and SQL scripts for the database.



Contact

| Email: mail@applicase.com

| Visit: <https://applicase.com>

| WhatsApp: +7 (922) 301-64-31

RUSSIA

| 111i Kosmonavtov Rd. Bldg 1 Ste 77

Perm 614066. Russia